

NSPA SOUTHERN OPERATIONAL CENTRE (SOC) MAIN CAPABILITY PACKAGES

NSPA SOC stores, transports, deploys, maintains and tears down camps based on customer requirements. The camps can be deployed worldwide at short notice.

Since the first delivery of CP 156 in 2005, camps have been used for military exercises, operations and humanitarian relief.

CP156:

What is it composed of?

- 4 Large Camps for 500 pax each;
- 2 Medium Camps for 200 pax each;
- 1 Small Camp for 100 pax.

What equipment & systems are included?

Tented and Containerized Facilities, Role 1, Utilities, Vehicles, Power Generators and distribution, Fuel, Vehicles, Office and Accommodation tents, HVAC, Ablution and Water treatment System, Laundry, Incinerator, Kitchen, Waste management



How quickly can it be deployed?

5 days NTM for the Medium Camps and 30/180 days NTM for the Large Camps. These timelines can be adapted based on the operational mission requirements.

How long can it sustain an operation?

Mission up to 2 years even with limited HN support.

Other features:

Fully customizable according to customer needs.
Self-sustainable.



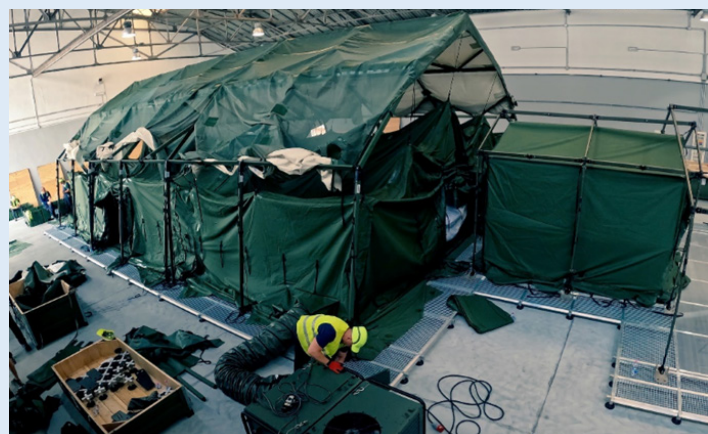
CP1101:

What is it composed of?

6 Camps for 300 pax each.

What equipment & systems are included?

Facilities (accommodation, offices, medical, dining, maintenance), All camp furniture, Utilities (water storage and purification, sewage treatment & disposal, waste management), Power generators, distribution, Air Conditioning, lighting, helipads, Force Protection (fences, barriers, electronic measures), Camp Vehicles.



How quickly can it be deployed?

5 days NTM, C-130 air-transportable. Easy and quick to setup.

How long can it sustain an operation?

Mission up to 6 months. In austere conditions with no Host Nation Support for 30 days.

Other features:

Light, modular, flexible, sustainable, interoperable, CBRN protected.



For any enquiry, please contact SOC Command:

soc@nspa.nato.int